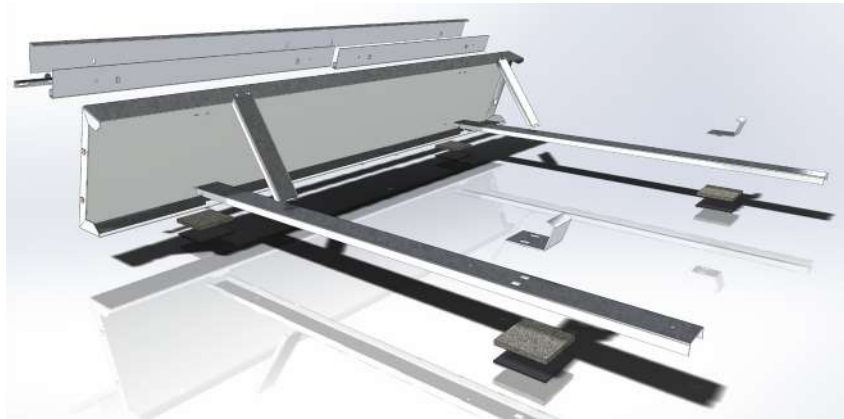
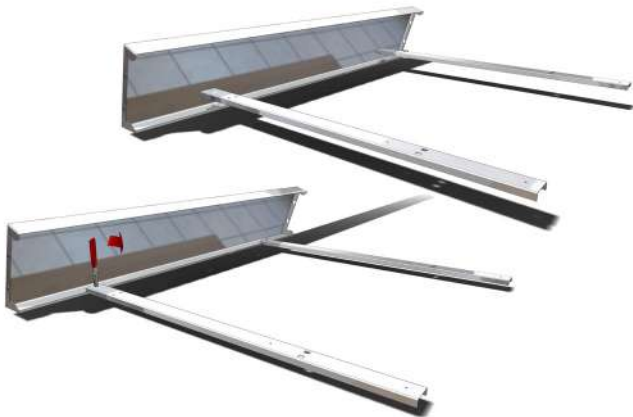


ALVA® Flat Roof Mounting System ◆ Designed with safety in mind
Single panel assembly and installation



Step 1

- ◆ Connect railing and rear wind deflector
- ◆ Secure connection by twisting aluminum by 90°

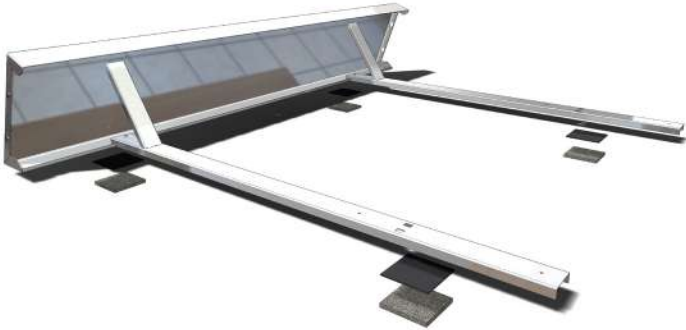


Step 2

- ◆ Slide diagonal pieces into slots in railing and rear wind deflector
- ◆ Secure connection by twisting aluminum by 90°

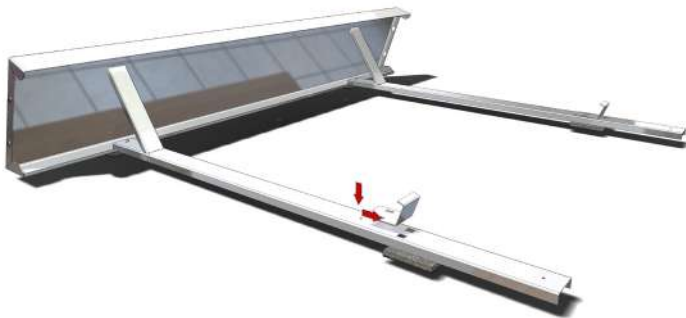


ALVA® Flat Roof Mounting System ◆ Designed with safety in mind
Single panel assembly and installation



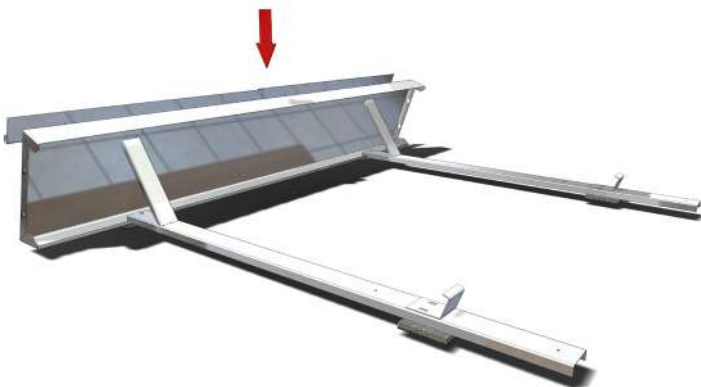
Step 3

- ◆ Placing rubber pads



Step 4

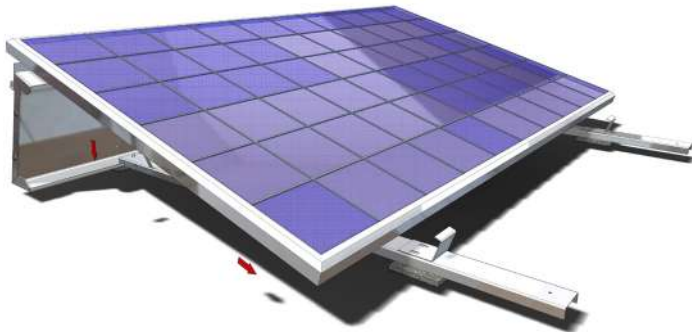
- ◆ Attaching lower mounting bracket



Step 5

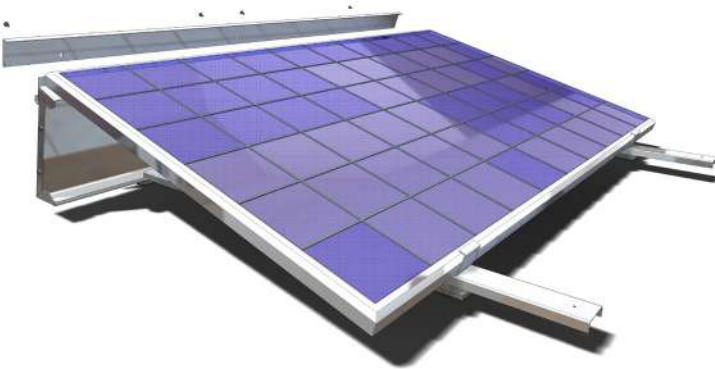
- ◆ Sliding two upper mounting brackets into the slots on rear wind deflector

ALVA® Flat Roof Mounting System ◆ Designed with safety in mind
Single panel assembly and installation



Step 6

- ◆ Placing solar panel



Step 7

- ◆ Securing solar panel



Tools required

- ◆ Electric drill / screw driver
- ◆ Philips head screw bit
- ◆ Pliers